



NORTH FALLS

Offshore Wind Farm

Offshore Order Limits and Boundary Co-ordinates Plan

Document Reference:	5.8
Volume:	5
APFP Regulation:	5(2)(j)
Date:	July 2024
Revision:	0

Project Reference: EN010119



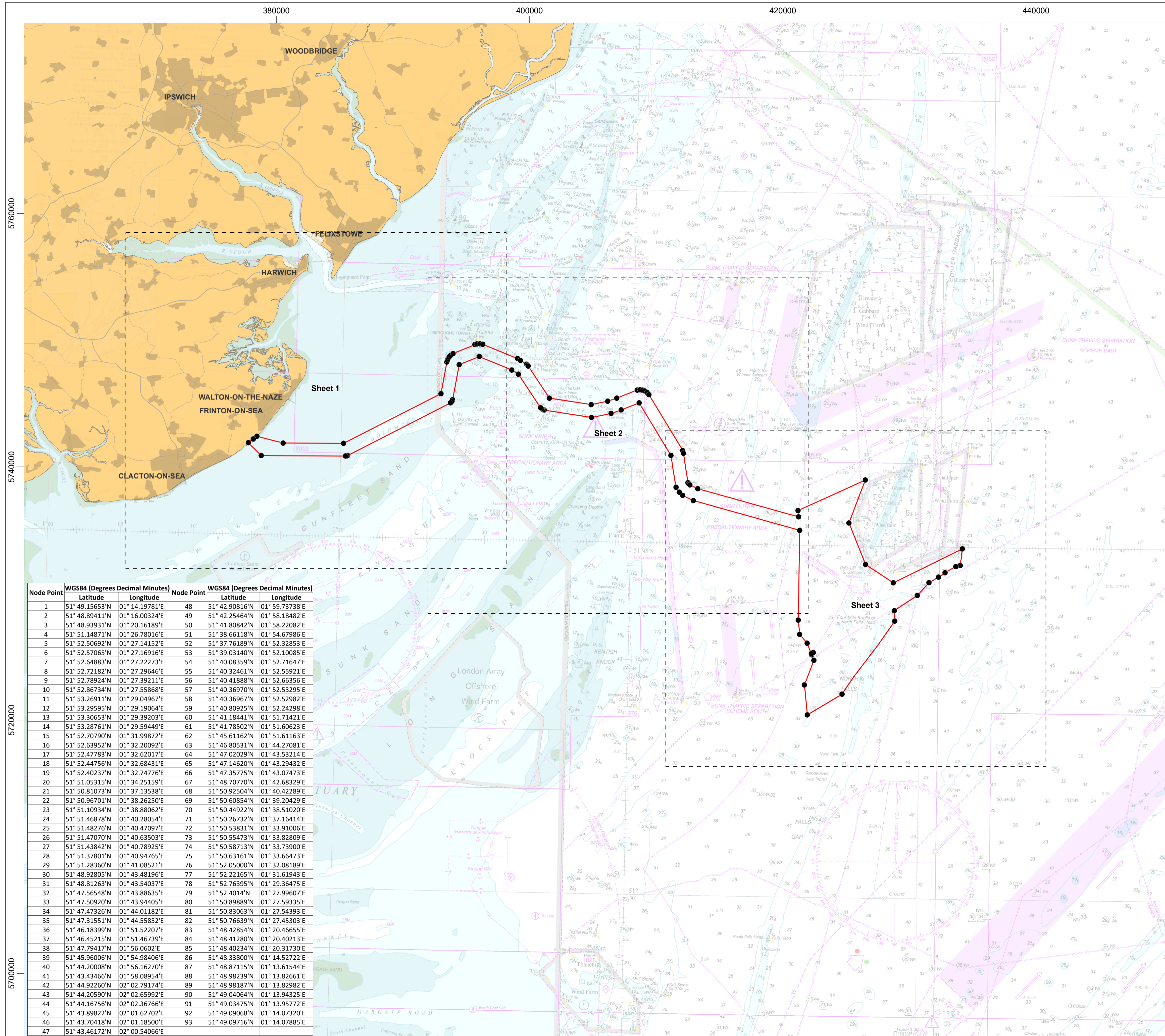
NORTH FALLS

Offshore Wind Farm

Project	North Falls Offshore Wind Farm
Document Title	Offshore Order Limits and Boundary Co-ordinates Plan
Document Reference	5.8
APFP Regulation	5(2)(j)
Supplier	Royal HaskoningDHV
Supplier Document ID	PB9244-RHD-ZZ-OF-DR-GS-0520

This document and any information therein are confidential property of North Falls Offshore Wind Farm Limited and without infringement neither the whole nor any extract may be disclosed, loaned, copied or used for manufacturing, provision of services or other purposes whatsoever without prior written consent of North Falls Offshore Wind Farm Limited, and no liability is accepted for loss or damage from any cause whatsoever from the use of the document. North Falls Offshore Wind Farm Limited retains the right to alter the document at any time unless a written statement to the contrary has been appended.

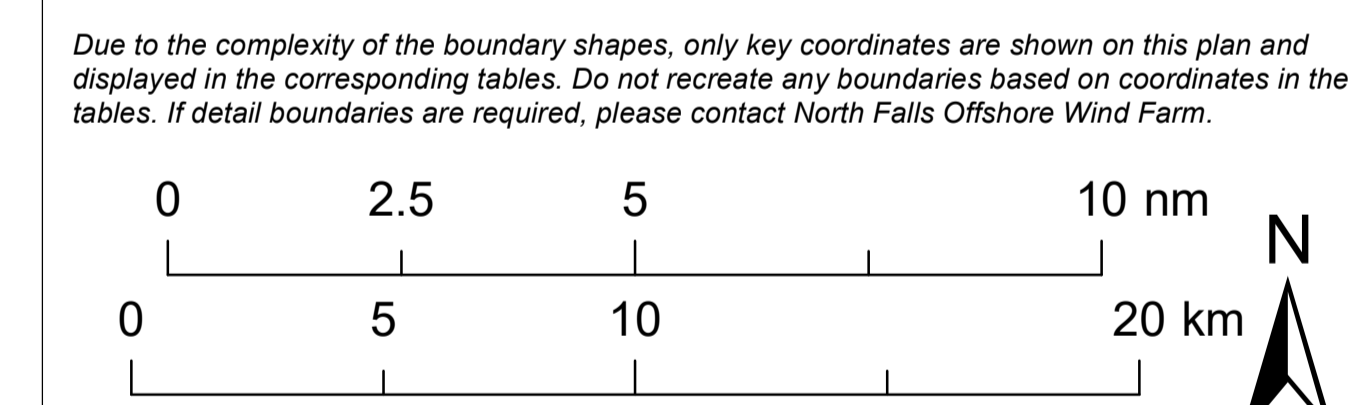
Revision	Date	Status/Reason for Issue	Originator	Checked	Approved
0	July 2024	Submission	RHDHV	NFOW	NFOW



Node Point	WGS84 (Degrees Decimal Minutes)		Node Point	WGS84 (Degrees Decimal Minutes)	
	Latitude	Longitude		Latitude	Longitude
1	51° 49.15653'N	01° 14.19781'E	48	51° 42.90816'N	01° 59.73738'E
2	51° 48.89411'N	01° 16.00324'E	49	51° 42.25464'N	01° 58.18482'E
3	51° 48.93931'N	01° 20.16189'E	50	51° 41.80842'N	01° 58.22082'E
4	51° 51.14871'N	01° 26.78016'E	51	51° 38.66118'N	01° 54.67986'E
5	51° 52.50692'N	01° 27.14152'E	52	51° 37.76189'N	01° 52.32853'E
6	51° 52.57065'N	01° 27.16916'E	53	51° 39.03140'N	01° 52.10085'E
7	51° 52.64883'N	01° 27.22273'E	54	51° 40.08359'N	01° 52.71647'E
8	51° 52.72182'N	01° 27.29646'E	55	51° 40.32461'N	01° 52.55921'E
9	51° 52.78924'N	01° 27.39211'E	56	51° 40.41888'N	01° 52.66356'E
10	51° 52.86734'N	01° 27.55868'E	57	51° 40.36970'N	01° 52.53295'E
11	51° 53.26911'N	01° 29.04967'E	58	51° 40.36967'N	01° 52.52982'E
12	51° 53.29595'N	01° 29.19064'E	59	51° 40.80925'N	01° 52.24298'E
13	51° 53.30653'N	01° 29.39203'E	60	51° 41.18441'N	01° 51.71421'E
14	51° 53.28761'N	01° 29.59449'E	61	51° 41.78502'N	01° 51.60623'E
15	51° 52.70790'N	01° 31.99872'E	62	51° 45.61162'N	01° 51.61163'E
16	51° 52.63952'N	01° 32.20092'E	63	51° 46.80531'N	01° 44.27081'E
17	51° 52.47783'N	01° 32.62017'E	64	51° 47.02029'N	01° 43.53214'E
18	51° 52.44756'N	01° 32.68431'E	65	51° 47.14620'N	01° 43.29432'E
19	51° 52.40232'N	01° 32.74776'E	66	51° 47.35775'N	01° 43.07473'E
20	51° 51.05315'N	01° 34.25159'E	67	51° 48.70770'N	01° 42.68329'E
21	51° 50.81073'N	01° 37.13538'E	68	51° 50.92504'N	01° 40.42289'E
22	51° 50.96701'N	01° 38.26250'E	69	51° 50.60854'N	01° 39.20429'E
23	51° 51.10934'N	01° 38.88062'E	70	51° 50.44922'N	01° 38.51020'E
24	51° 51.46878'N	01° 40.28054'E	71	51° 50.26732'N	01° 37.16414'E
25	51° 51.48276'N	01° 40.47097'E	72	51° 50.53831'N	01° 33.91006'E
26	51° 51.47070'N	01° 40.63503'E	73	51° 50.55473'N	01° 33.82809'E
27	51° 51.43842'N	01° 40.78925'E	74	51° 50.58713'N	01° 33.73900'E
28	51° 51.37801'N	01° 40.94765'E	75	51° 50.63161'N	01° 33.66473'E
29	51° 51.28360'N	01° 41.08521'E	76	51° 52.05000'N	01° 32.08189'E
30	51° 48.92805'N	01° 43.48196'E	77	51° 52.22165'N	01° 31.61943'E
31	51° 48.81263'N	01° 43.54037'E	78	51° 52.76395'N	01° 29.36475'E
32	51° 47.56548'N	01° 43.88635'E	79	51° 52.4014'N	01° 27.99607'E
33	51° 47.50920'N	01° 43.94405'E	80	51° 50.89889'N	01° 27.59335'E
34	51° 47.47326'N	01° 44.01182'E	81	51° 50.83063'N	01° 27.54393'E
35	51° 47.31551'N	01° 44.55852'E	82	51° 50.76639'N	01° 27.45303'E
36	51° 46.18399'N	01° 51.52207'E	83	51° 48.42854'N	01° 20.46655'E
37	51° 46.45215'N	01° 51.46739'E	84	51° 48.41280'N	01° 20.40213'E
38	51° 47.79417'N	01° 56.0602'E	85	51° 48.40234'N	01° 20.31730'E
39	51° 45.96006'N	01° 54.98406'E	86	51° 48.33800'N	01° 14.52722'E
40	51° 44.20008'N	01° 56.16270'E	87	51° 48.87115'N	01° 13.61544'E
41	51° 43.43466'N	01° 58.08954'E	88	51° 48.98239'N	01° 13.82661'E
42	51° 44.92260'N	02° 02.79174'E	89	51° 48.98187'N	01° 13.82982'E
43	51° 44.20590'N	02° 02.65992'E	90	51° 49.04064'N	01° 13.94325'E
44	51° 44.16756'N	02° 02.36766'E	91	51° 49.03475'N	01° 13.95772'E
45	51° 43.89822'N	02° 01.62702'E	92	51° 49.09068'N	01° 14.07320'E
46	51° 43.70418'N	02° 01.18500'E	93	51° 49.09716'N	01° 14.07885'E
47	51° 43.46172'N	02° 00.54066'E			



- Legend**
- Order Limits
 - Sheet Boundary
 - Order Limits Node (Point)



Data Source: © HaskoningDHV UK Ltd, 2024
 © British Crown and OceanWise, 2024. All rights reserved. License No. EMS-EK001-906345.
 Not to be used for Navigation. Sources: Esri, GEBCO, NOAA, National Geographic, Garmin, HERE, Geonames.org, and other contributors.

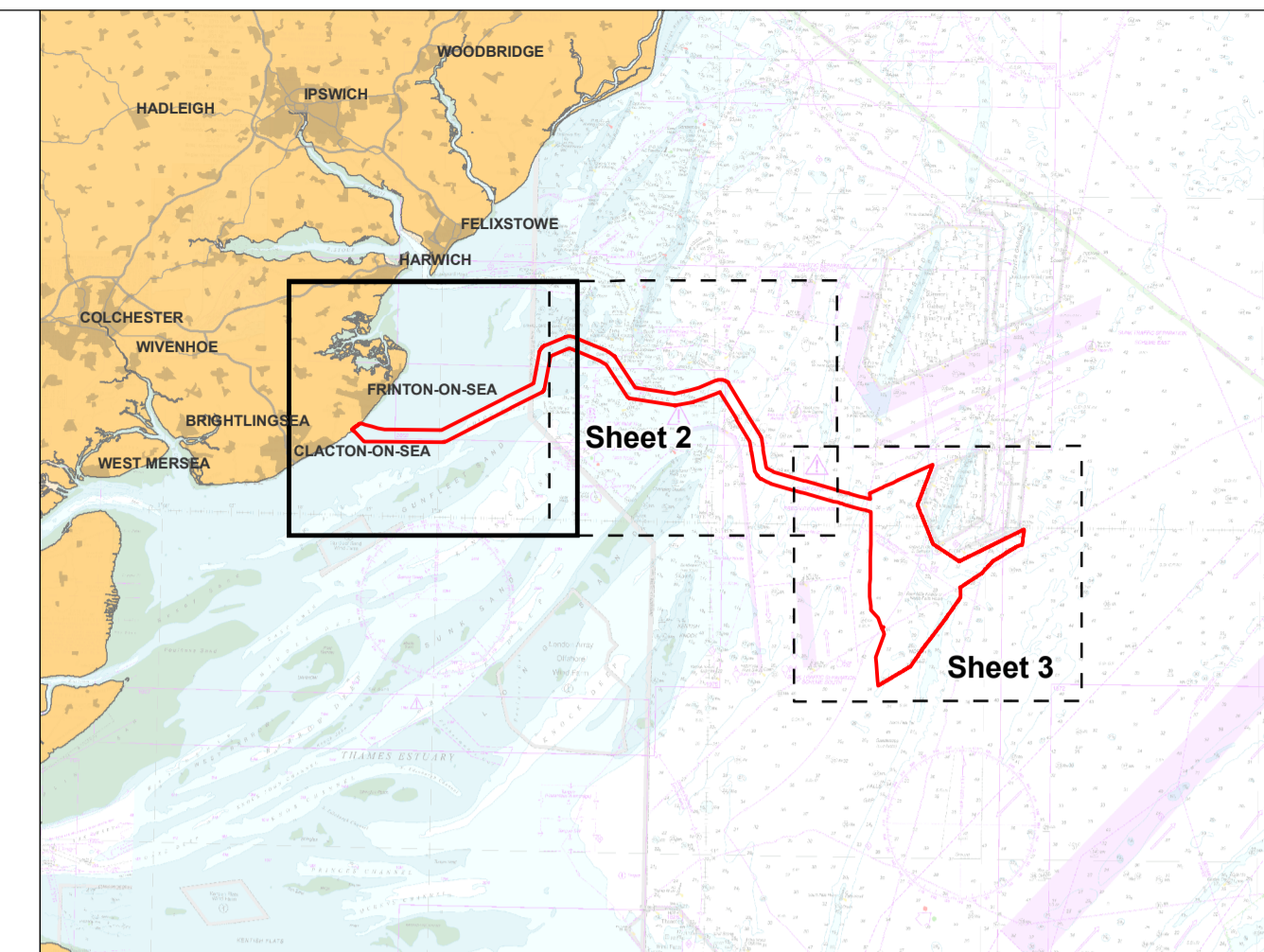
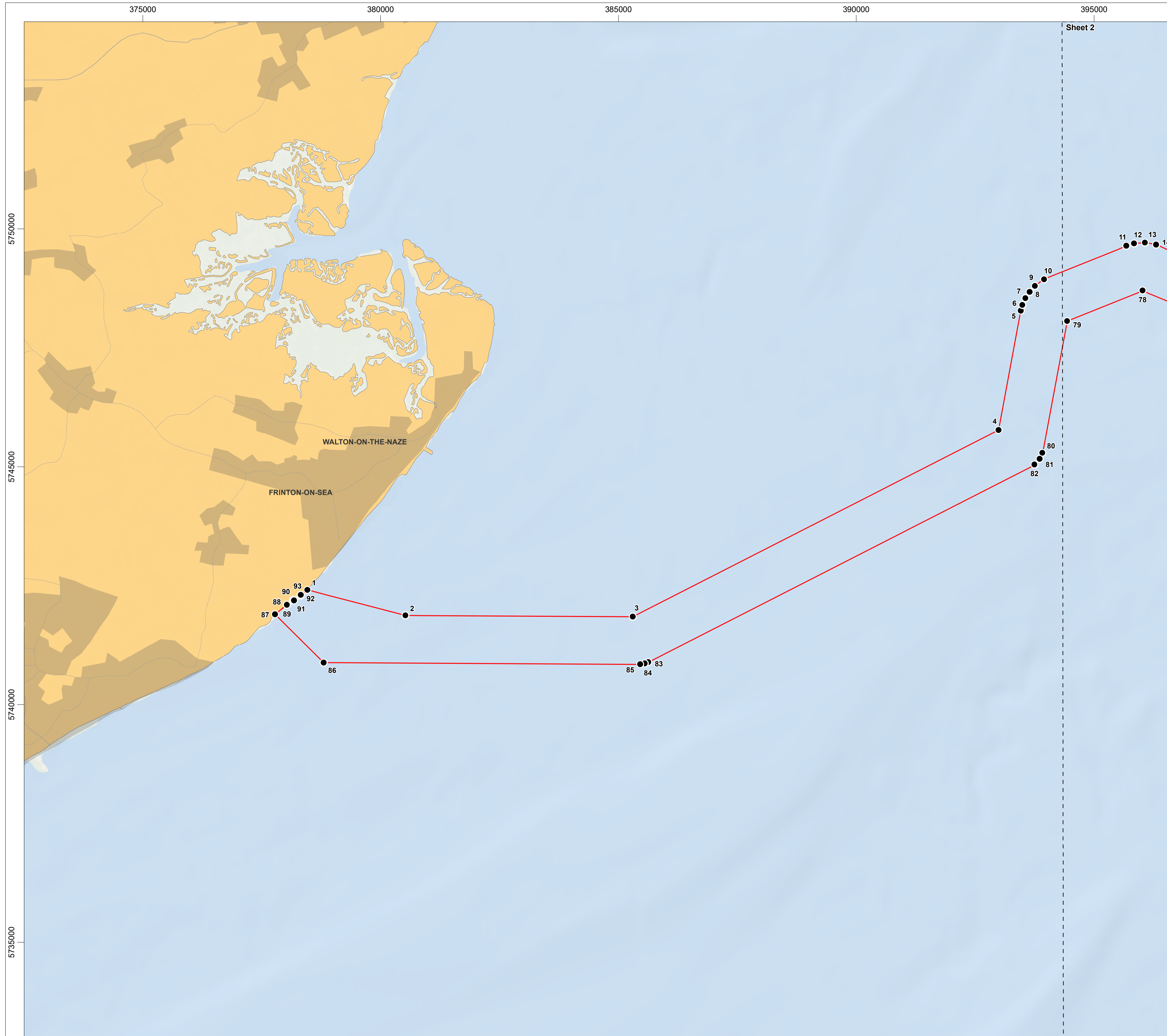
Drawing Title
Offshore Order Limits and Boundary Co-ordinates Plan - Key Plan

Rev	Date	Remarks	Drwn	Chkd
03	04/07/2024	Third issue	FC	GK
02	21/05/2024	Second issue	FC	GK
01	25/03/2024	First issue	SB	GK

Drawing Number	Doc Ref	APFP Ref
PB9244-RHD-ZZ-OF-DR-GS-0520	5.8	5(2)(j)

Scale	Plot Size	Datum	Projection
1:150,000	A1	WGS84	UTM31N





- Legend**
- Order Limits
 - Sheet Boundary
 - Order Limits Node (Point)

Due to the complexity of the boundary shapes, only key coordinates are shown on this plan and displayed in the corresponding tables. Do not recreate any boundaries based on coordinates in the tables. If detail boundaries are required, please contact North Falls Offshore Wind Farm.



Data Source: © HaskoningDHV UK Ltd, 2024
 © British Crown and OceanWise, 2024. All rights reserved. License No. EMS-EK001-906345.
 Not to be used for Navigation. Sources: Esri, GEBCO, NOAA, National Geographic, Garmin, HERE, Geonames.org, and other contributors.

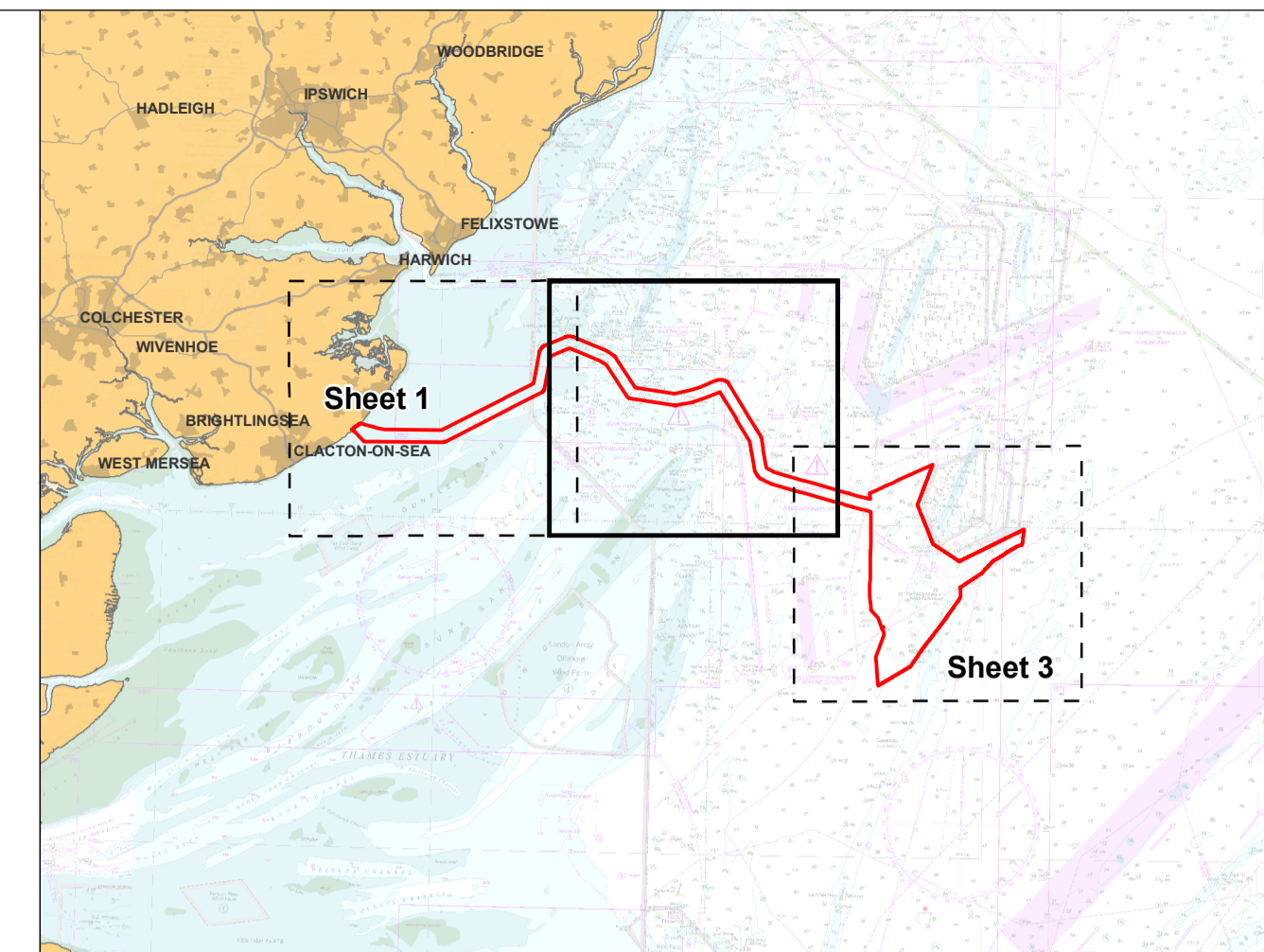
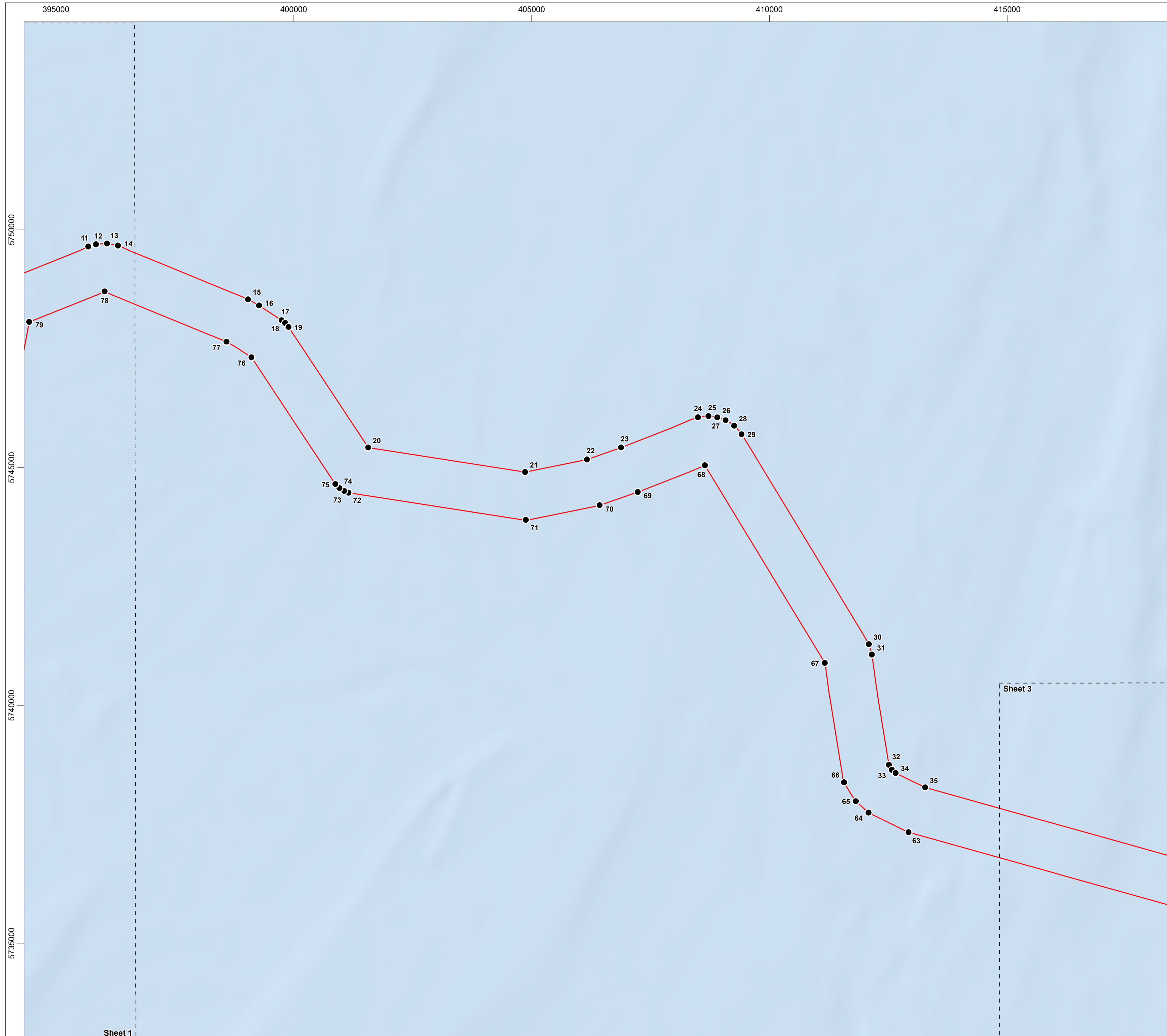
Drawing Title
**Offshore Order Limits and
 Boundary Co-ordinates Plan -
 Sheet 1**

Rev	Date	Remarks	Drwn	Chkd
03	04/07/2024	Third issue	FC	GK
02	21/05/2024	Second issue	FC	GK
01	25/03/2024	First issue	SB	GK

Drawing Number	Doc Ref	APFP Ref
PB9244-RHD-ZZ-OF-DR-GS-0520	5.8	5(2)(j)

Scale	Plot Size	Datum	Projection
1:40,000	A1	WGS84	UTM31N





- Legend**
- Order Limits
 - Sheet Boundary
 - Order Limits Node (Point)

Due to the complexity of the boundary shapes, only key coordinates are shown on this plan and displayed in the corresponding tables. Do not recreate any boundaries based on coordinates in the tables. If detail boundaries are required, please contact North Falls Offshore Wind Farm.



Data Source: © HaskoningDHV UK Ltd, 2024
 © British Crown and OceanWise, 2024. All rights reserved. License No. EMS-EK001-906345.
 Not to be used for Navigation. Sources: Esri, GEBCO, NOAA, National Geographic, Garmin, HERE, Geonames.org, and other contributors.

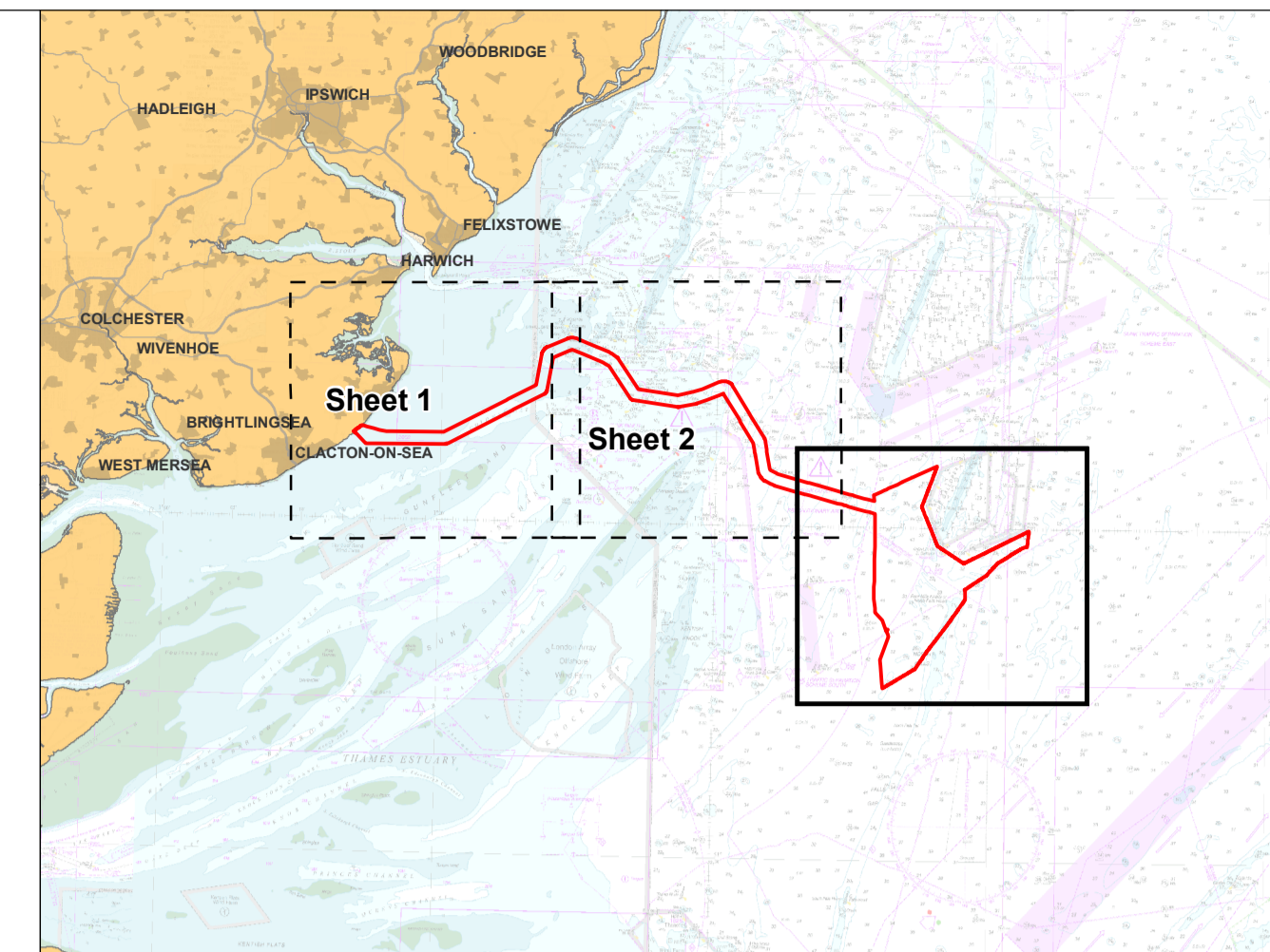
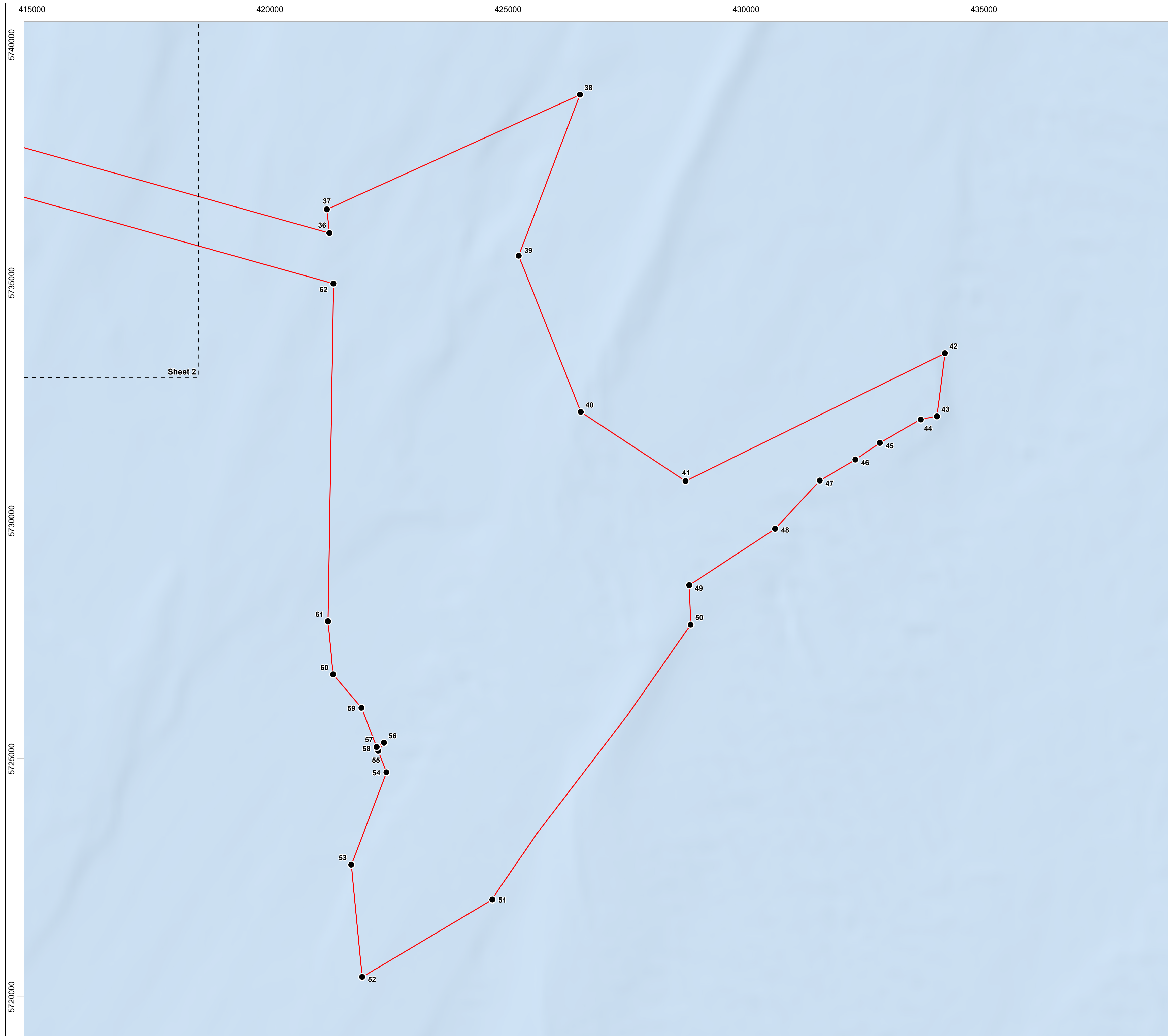
Drawing Title
**Offshore Order Limits and
 Boundary Co-ordinates Plan -
 Sheet 2**

Rev	Date	Remarks	Drwn	Chkd
03	04/07/2024	Third issue	FC	GK
02	21/05/2024	Second issue	FC	GK
01	25/03/2024	First issue	SB	GK

Drawing Number	Doc Ref	APFP Ref
PB9244-RHD-ZZ-OF-DR-GS-0520	5.8	5(2)(j)

Scale	Plot Size	Datum	Projection
1:40,000	A1	WGS84	UTM31N

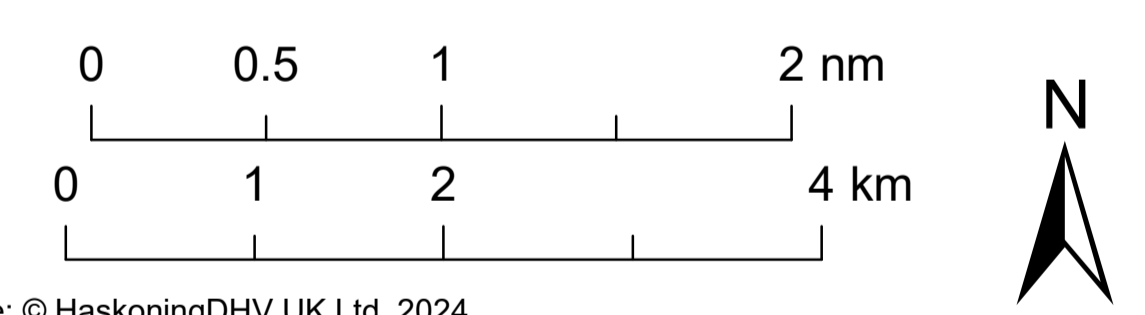




Legend

- Order Limits
- Sheet Boundary
- Order Limits Node (Point)

Due to the complexity of the boundary shapes, only key coordinates are shown on this plan and displayed in the corresponding tables. Do not recreate any boundaries based on coordinates in the tables. If detail boundaries are required, please contact North Falls Offshore Wind Farm.



Data Source: © HaskoningDHV UK Ltd, 2024
 © British Crown and OceanWise, 2024. All rights reserved. License No. EMS-EK001-906345.
 Not to be used for Navigation. Sources: Esri, GEBCO, NOAA, National Geographic, Garmin, HERE, Geonames.org, and other contributors.

Drawing Title **Offshore Order Limits and Boundary Co-ordinates Plan - Sheet 3**

Rev	Date	Remarks	Drwn	Chkd
03	04/07/2024	Third issue	FC	GK
02	21/05/2024	Second issue	FC	GK
01	25/03/2024	First issue	SB	GK

Drawing Number	Doc Ref	APFP Ref
PB9244-RHD-ZZ-OF-DR-GS-0520	5.8	5(2)(j)

Scale	Plot Size	Datum	Projection
1:40,000	A1	WGS84	UTM31N



Royal HaskoningDHV
Enhancing Society Together



NORTH FALLS
Offshore Wind Farm



NORTH FALLS

Offshore Wind Farm



HARNESSING THE POWER OF NORTH SEA WIND

North Falls Offshore Wind Farm Limited

A joint venture company owned equally by SSE Renewables and RWE.

To contact please email contact@northfallsoffshore.com

© 2024 All Rights Reserved

North Falls Offshore Wind Farm Limited Registered Address: Windmill Hill Business Park, Whitehill Way, Swindon, Wiltshire, SN5 6PB, United Kingdom
Registered in England and Wales Company Number: 12435947

NorthFallsOffshore.com